

Revival Pharms

 10501 O. St.
 Lincoln, NE 68520
 jeanne.greisen@revivalpharms.com

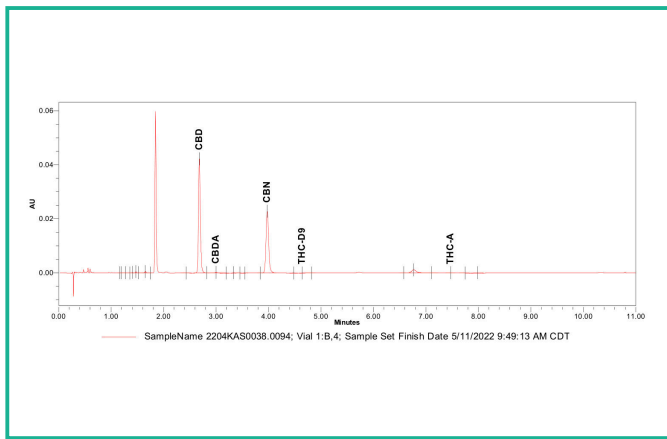
Lic. #31_0117

Sample: 2205KAS0038.0094

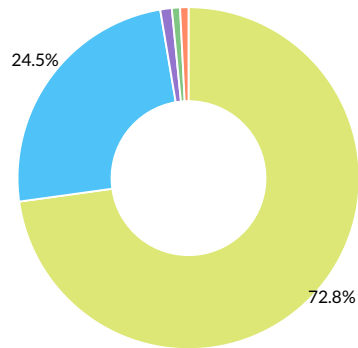
 Strain: sativa
 Batch#: 20220425B; Batch Size: g
 Sample Received: 05/09/2022; Report Created: 05/11/2022

Sampling: ; Environment:

20220425B

 Ingestible, Tincture
 Harvest Process Lot: ; METRC Batch: ; METRC Sample:


Legend: CBD (yellow), CBN (blue), CBDa (purple), THCa (green), Δ9-THC (orange)



Cannabinoids

Uncertainty: %

0.0332%
 Total THC

1.6695%
 Total CBD

2.2633%
 Total Cannabinoids

Complete

Analyte	LOD	LOQ	Mass	Mass	Uncertainty	Analyte	LOD	LOQ	Mass	Mass	Uncertainty
	%	%	%	mg/g			%	%	%	mg/g	
Δ9-THC	0.0000	0.0001	0.0179	0.179	0.0036	CBDa	0.0000	0.0001	0.0246	0.246	0.0017
THCa	0.0001	0.0002	0.0175	0.175	0.0016	CBN	0.0000	0.0001	0.5554	5.554	0.0275
CBD	0.0000	0.0001	1.6479	16.479	0.4117	Total			2.2633	22.633	

Total THC = THCa * 0.877 + Δ9-THC
 Total CBD = CBDa * 0.877 + CBD
 Instrument: Waters ACQUITY UPLC™ H-Class PLUS System with UV detection.
 Water Activity Instrument: Rotronic HC2-Aw USB Set.
 Moisture Instrument: Mettler Toledo HE53 Halogen Moisture Analyzer

 Kennebec Analytical Services, LLC
 3800 S 6th St
 Lincoln, NE
 (402) 413-9796
 www.kennebecanalytical.com/
 Lic# RK0608793

 Inga Krassovskaya
 Lab Director

 Confident Cannabis
 All Rights Reserved
 support@confidentcannabis.com
 (866) 506-5866


Powered by Confident Cannabis

ND=Not Detected; NR=Not Reported; LOD=Limit of Detection; LOQ=Limit of Quantitation. This product has been tested by Kennebec Analytical Services (KAS), using valid testing methods and a quality system as required by state law. The Certificate of Accreditation No. AT-2939 for cannabinoid potency may be found at www.ANAB.org. Values reported relate only to the product tested and batched under the batch number identified above. KAS makes no claims as to the efficacy, safety, or other risks for any detected or non-detected level of any compounds reported herein. This Certificate of Analysis must not be altered, and shall not be reproduced except in full, without the written approval of KAS.